

HSH-K6

Discone hook stick with voltage detector

AC 6.6kV

Enhance Work Safety and Efficiency



■Features

- Work safety and efficiency are improved by combining the voltage-detecting function to the medium voltage cutout operating rod.

■Specifications

Model	HSH-K6	
Working voltage range	AC 6.6kV	
Operation starting voltage (Voltage to ground)	1300V ± 20% (continuous indications of sound & light) (with insulated wire)	
Insulation resistance	Between contact tip (metal fitting) and grip: 100 MΩ or more	
Dielectric strength	Ditto: 1 min	
Leakage current	1 mA or less at dielectric strength test	
Indication of operation	Light	Light emission: It shall be able to confirm luminance of 8,000 lux.
	Sound	Sound: 50 dB or more at a distance of 2 m

Operating temperature range	-10°C ~ +40°C
Structure	Waterproof (Water shall not ingress.)
Tensile performance	200kg 1 min
Battery	6R61 or 6F22(9V) × 1 pcs
Dimensions	About 470mm
Weight	About 390g

* Without the casing

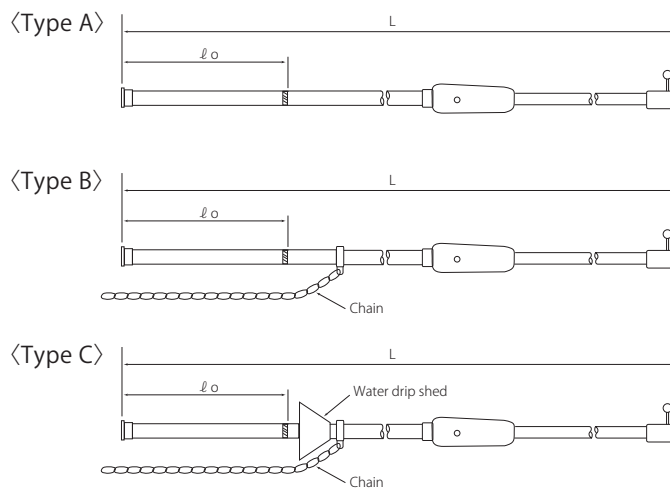
SA109 □ - □

Hook Stick for D/S (Disconnecting Switch)

AC 10kV~110kV

■Features

- There are lineups with or without the water drip shed (for outdoor use) as well as chain.



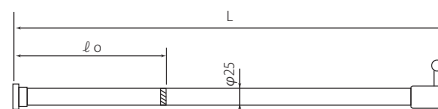
■Specifications

Model (SA109)	Indoor									Chain	Water drip shed
	A-1	A-1.5	A-2	A-3	A2-4	A2-5	A2-6	A3-6			
Applicable voltage	10kV	20kV	30kV	40kV	70kV			110kV		Type A	None
Length of hook rod (L)	1.0m	1.5m	2.0m	3.0m	4.0m (connection of 2 rods)	5.0m (connection of 2 rods)	6.0m (connection of 2 rods)	6.0m (connection of 3 rods)	Type B	Exist	None
Rod dia. & connecting method	φ31	1.0m	1.5m	2.0m	3.0m	2.0m	2.5m	—	Type C	Outdoors	Exist
	φ34	—	—	—	—	—	—	3.0m	2.0m+2.0m		
	φ39	—	—	—	—	—	—	3.0m	2.0m+2.0m		
Length of grip (ℓ o)	0.3m	0.5m	0.5m	0.7m	0.7m	1.0m	1.0m	1.0m			
Tip metal fitting for discone hook rod	SA108-B			SA108-C			SA108-E				

D □

Hook stick for D/S in Cubicle

AC 6.6kV~30kV



■Specifications

Class	D1	D2	D3	D4
Length (L)	0.5m	1.0m	1.5m	2.0m
Length of grip (ℓ o)	0.3m	0.3m	0.5m	0.5m
Applicable voltage	6.6kV	10kV	20kV	30kV