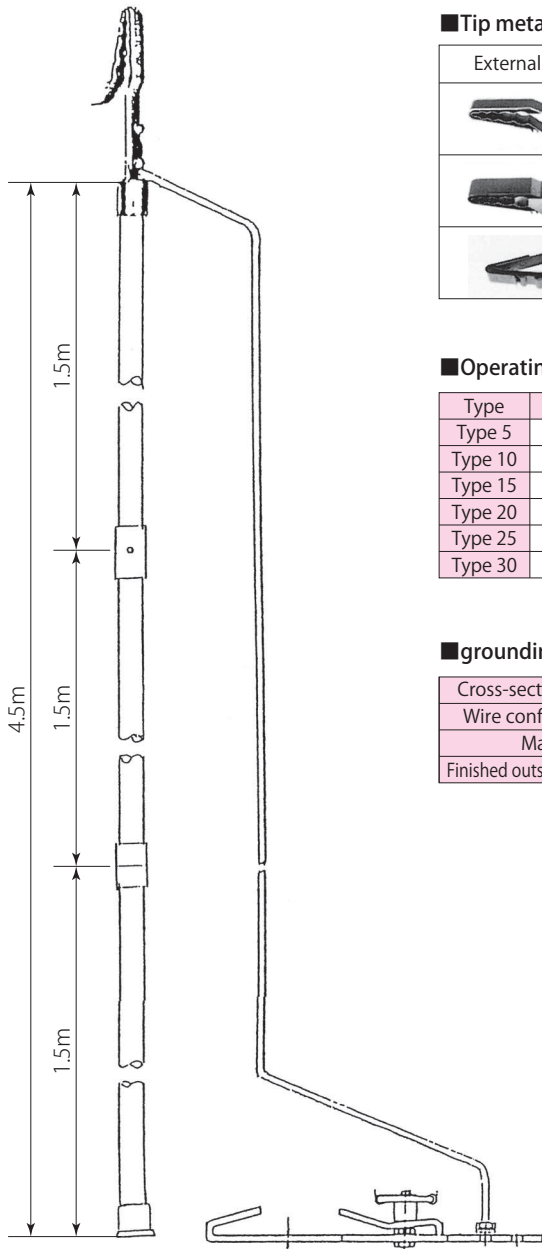


# Grounding hook for railways

Custom production is possible with combination of tip metal fitting, length of operating rod, length and size of earth wire, and grounding metal fitting.



## Tip metal fitting

External appearance	Model name	Range of use (mm)	Dimension	Weight
	SA106-A Insertion type	$\phi 10 \sim 25$		630g
	SA106-C Slanted insertion type	$\phi 10 \sim 25$		720g
	SA106-S Compact insertion type	$\phi 4 \sim 10$		400g

## Operating stick

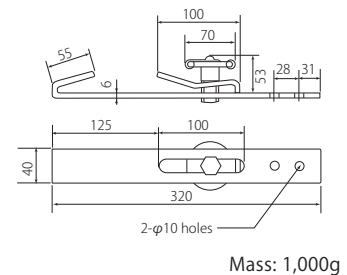
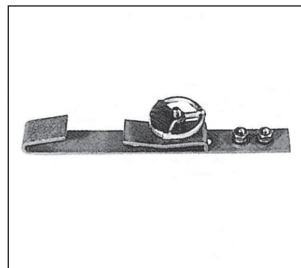
Type	Length	Length
Type 5	0.5m	Single rod
Type 10	1.0m	
Type 15	1.5m	
Type 20	2.0m	
Type 25	2.5m	
Type 30	3.0m	

Type	Length	Number of connections
Type 35	3.5m	Connection of 2 rods (1.5 m + 2.0 m)
Type 40	4.0m	Connection of 2 rods (2.0 m + 2.0 m)
Type 45-A	4.5m	Connection of 2 rods (2.0 m + 2.5 m)
Type 45-B		Connection of 3 rods (1.5 m + 1.5 m + 1.5 m)
Type 50	5.0m	Connection of 2 rods (2.5 m + 2.5 m)
Type 60-A	6.0m	Connection of 2 rods (3.0 m + 3.0 m)
Type 60-B		Connection of 3 rods (2.0 m + 2.0 m + 2.0 m)

## grounding wire

Cross-sectional area	38mm <sup>2</sup>	60mm <sup>2</sup>	100mm <sup>2</sup>
Wire configuration	19/38/0.26	19/60/0.26	37/51/0.26
Mass	455g/m	680g/m	1120g/m
Finished outside diameter	12.9mm	15.2mm	19.0mm

## Grounding metal fitting (SA120)



## Standard model

Type	Tip metal fitting	Grounding wire	Operating rod	Grounding metal fitting	Bag for housing
SA106A Type 45-A	SA106A	60mm <sup>2</sup> × 7m	4.5 m, connection of 2 rods (2.0 m + 2.5 m)	SA120	Sold separately
SA106A Type 45-B	SA106A	60mm <sup>2</sup> × 7m	4.5 m, connection of 3 rods (1.5 m + 1.5 m + 1.5 m)	SA120	Sold separately