

# HST-W80JS

Voltage detector for AC overhead contact wire

AC 20kV~80.5kV

- Audio signaling and light emitting
- Telescopic type
- Waterproof

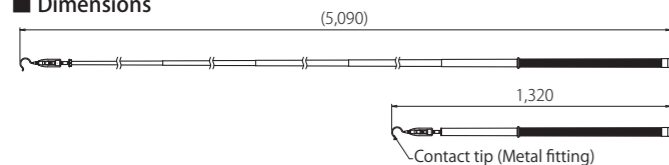
## Features

- Standby display function is provided. After pressing the test button, the green LED lights up even after voltage detection. \* The green LED automatically turns off in 1 to 2 min. Voltage detection is possible even after turning off (in case there is no problem with battery level)



Charged indication (Red LED lit)    Uncharged indication (Green LED lit)

## Dimensions



## Voltage Detector for AC Overhead Contact wires of normal Railways and Shinkansen



## Accessory



Bag for housing

## Specifications

Working voltage range	AC20kV~80.5kV
Operation starting voltage (Voltage to ground)	5 kV ± 20% (bare wire)
Frequency	50Hz/60Hz
Indication of operation	Light: It can be confirmed in the luminance of 8,000 lux.
	Sound: 50 dB or more at a distance of 2 m
Dielectric strength	Insulating stick, AC 75 kV/300mm x 1 min. (6 locations on the insulating stick, except for electrode and joints)
Leakage current	100 μA or less at dielectric strength test/1 location
Battery	LR44(1.5V) × 2 pcs
Battery life	About 4 hr. continuous operation
Operating temperature range	-10°C to +50°C (However, there shall be no dew condensation inside.)
Weight	About 1 kg

\* HST-W80JS-Y1 (spec. with Y-type Contact tip (Metal fitting) also exists.

# HXR-20J (For normal railways) HXR-25J (For high speed rail)

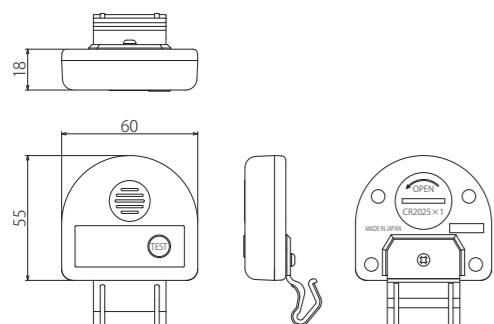
Medium Voltage hot-line proximity detector

AC HXR-20J 20kV  
HXR-25J 25kV

## Features

- Alarm is generated at a distance of about 2 m from the energized overhead contact lines, normal railways (AC 20kV) and High Speed Railway (AC 25kV).
- It has directionality to identify overhead contact lines in a charged state.
- It is compact, lightweight, and can be fitted to a helmet with a one-touch operation

## Dimensions (common to Model HXR-20J & Model HXR-25J)

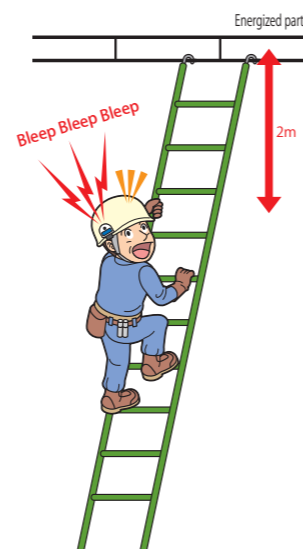


## Non-contact Detection of Charging State of AC Overhead Contact Lines

Jointly developed with JR EAST (East Japan Railway Company)



HXR-25J

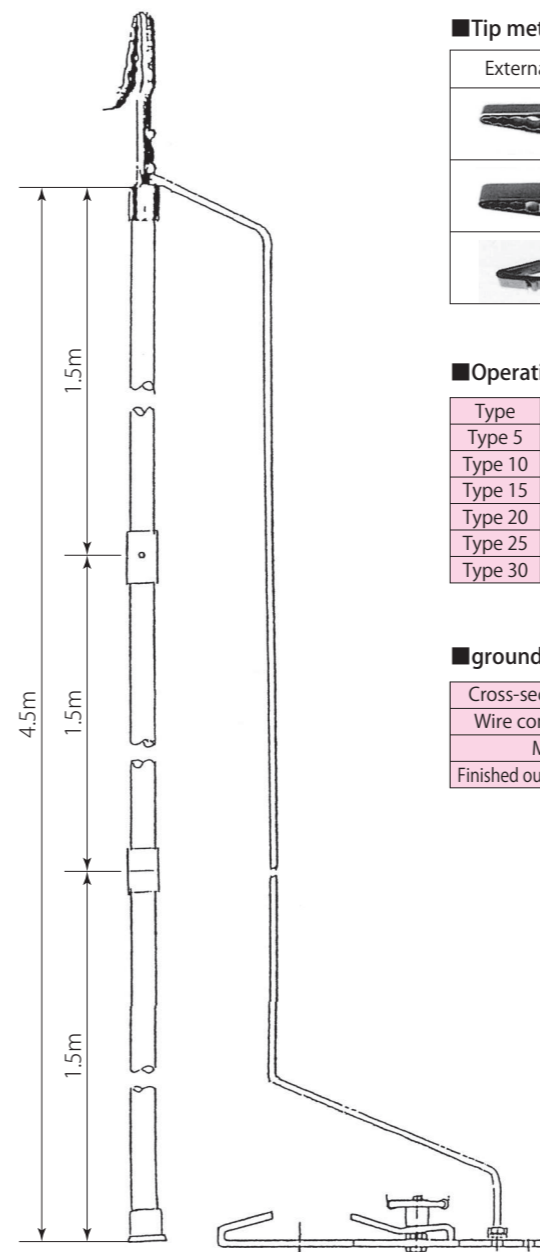


## Specifications

Operating sensitivity (Electric field intensity)	HXR-20J : AC20kV HXR-25J : AC25kV
Standard operation starting distance	About 2 m (It differs depending on the environment.)
Alarm operation	Piezoelectric buzzer type
Sound volume	80dB/10cm or more
Frequency	Common use for 50/60 Hz
Operating temperature range	-10°C ~ +40°C
Battery	CR2025(3V) x 1 pcs
Battery life	About two years in unused state
Dimensions	60mm × 55mm × 18mm
Weight	About 40g

# Grounding hook for railways

Custom production is possible with combination of tip metal fitting, length of operating rod, length and size of earth wire, and grounding metal fitting.



## Tip metal fitting

External appearance	Model name	Range of use (mm)	Dimension	Weight
	SA106-A Insertion type	φ10~25		630g
	SA106-C Slanted insertion type	φ10~25		720g
	SA106-S Compact insertion type	φ4~10		400g

## Operating stick

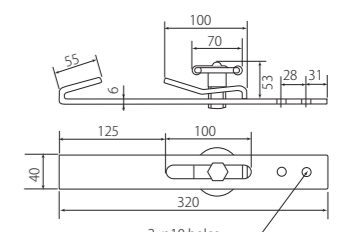
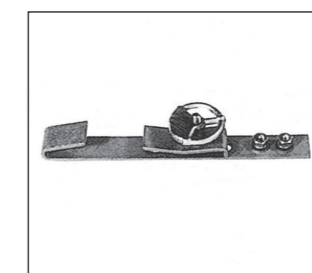
Type	Length	Length
Type 5	0.5m	Single rod
Type 10	1.0m	
Type 15	1.5m	
Type 20	2.0m	
Type 25	2.5m	
Type 30	3.0m	

Type	Length	Number of connections
Type 35	3.5m	Connection of 2 rods (1.5 m + 2.0 m)
Type 40	4.0m	Connection of 2 rods (2.0 m + 2.0 m)
Type 45-A	4.5m	Connection of 2 rods (2.0 m + 2.5 m)
Type 45-B	4.5m	Connection of 3 rods (1.5 m + 1.5 m + 1.5 m)
Type 50	5.0m	Connection of 2 rods (2.5 m + 2.5 m)
Type 60-A	6.0m	Connection of 2 rods (3.0 m + 3.0 m)
Type 60-B	6.0m	Connection of 3 rods (2.0 m + 2.0 m + 2.0 m)

## grounding wire

Cross-sectional area	38mm <sup>2</sup>	60mm <sup>2</sup>	100mm <sup>2</sup>
Wire configuration	19/38/0.26	19/60/0.26	37/51/0.26
Mass	455g/m	680g/m	1120g/m
Finished outside diameter	12.9mm	15.2mm	19.0mm

## Grounding metal fitting (SA120)



Mass: 1,000g

## Standard model

Type	Tip metal fitting	Grounding wire	Operating rod	Grounding metal fitting	Bag for housing
SA106A Type 45-A	SA106A	60mm <sup>2</sup> × 7m	4.5 m, connection of 2 rods (2.0 m + 2.5 m)	SA120	Sold separately
SA106A Type 45-B	SA106A	60mm <sup>2</sup> × 7m	4.5 m, connection of 3 rods (1.5 m + 1.5 m + 1.5 m)	SA120	Sold separately